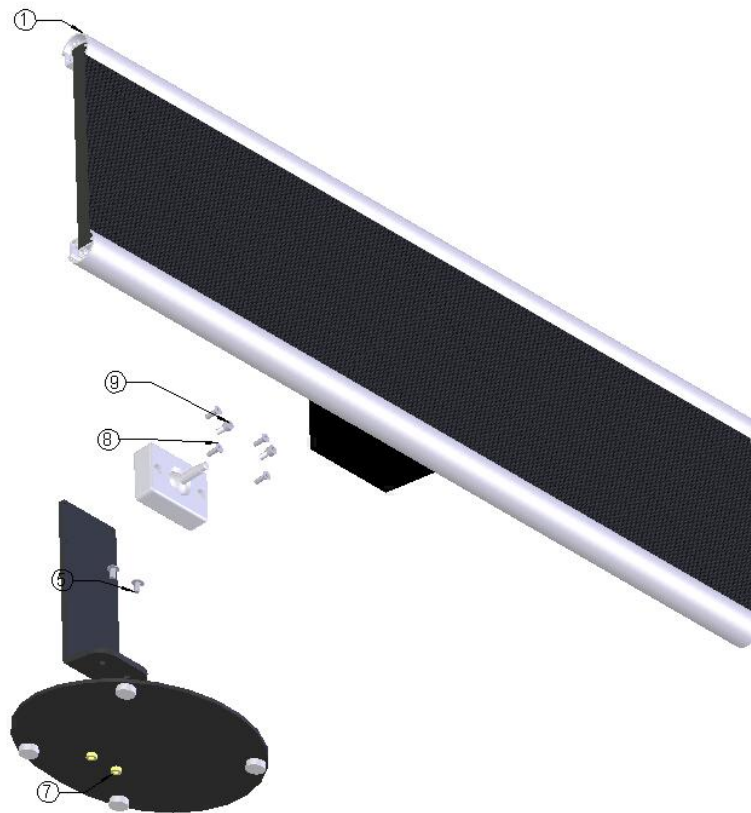


## FINAL 90i CENTER PANEL MOUNTING INSTRUCTIONS



### Assembly of the Final Sound model 90i center panel

1. Demount the ball connecting assy
2. Take the ball part and cover plate from the ball connecting assy
3. Screw the ball in the loudspeaker's aluminium assy. Don't forget the cover plate
4. Take the ground plate from the ball connecting assy
5. Screw the ground plate in the set top stand's connecting assy with 4 x screw m5x 16 (8)
6. Mount both assemblies together with 2x screw m6x12 (9)
7. Put the Final panel(1) with the set top stand's aluminium assy on the footplate (7)
8. Screw the two m6x12 screws real tight (5)
9. Glue the rubber pads to the footplate's underside



Final Sound, L.L.C. 500 West Cummings Park, Suite 2500 Woburn, MA 01801 T:(781) 938-6416 F:(781) 938-6415

Final Sound Solutions BV - Eisenhowerweg 8d - 5466 AC Veghel - Tel.:+31-(0)413-311115 Fax +31 (0)413-311119